

## Reading Multiple Switches on a PIC12C67X or any A/D Part with a Single Port Line

Author: *Larry G. Nelson Sr.  
Nelson Research  
Webster, Ma.  
L.Nelson@ieee.org*

### INTRODUCTION

Using an A/D converter pin on the PICmicro, it is possible to read multiple switches, while also determining multiple key combinations without scanning or diodes. The external components are the switches or contact closures and an inexpensive resistor network.

FIGURE 1: BLOCK DIAGRAM

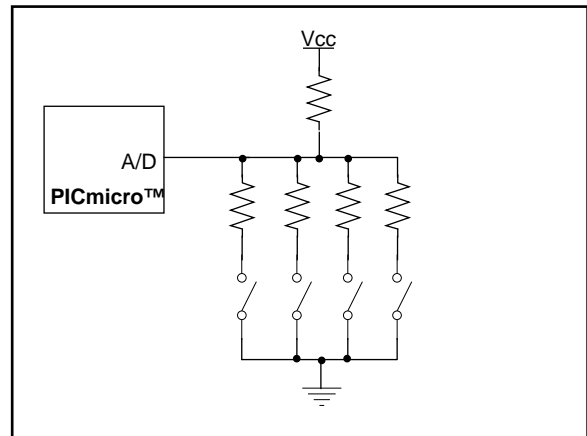


FIGURE 2: FLOWCHART

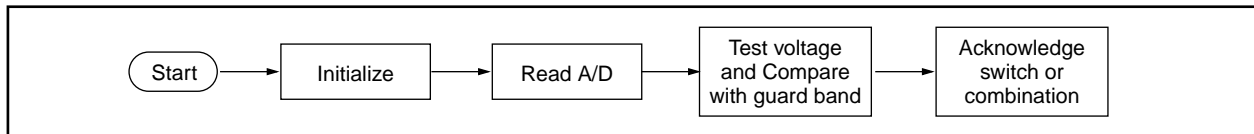
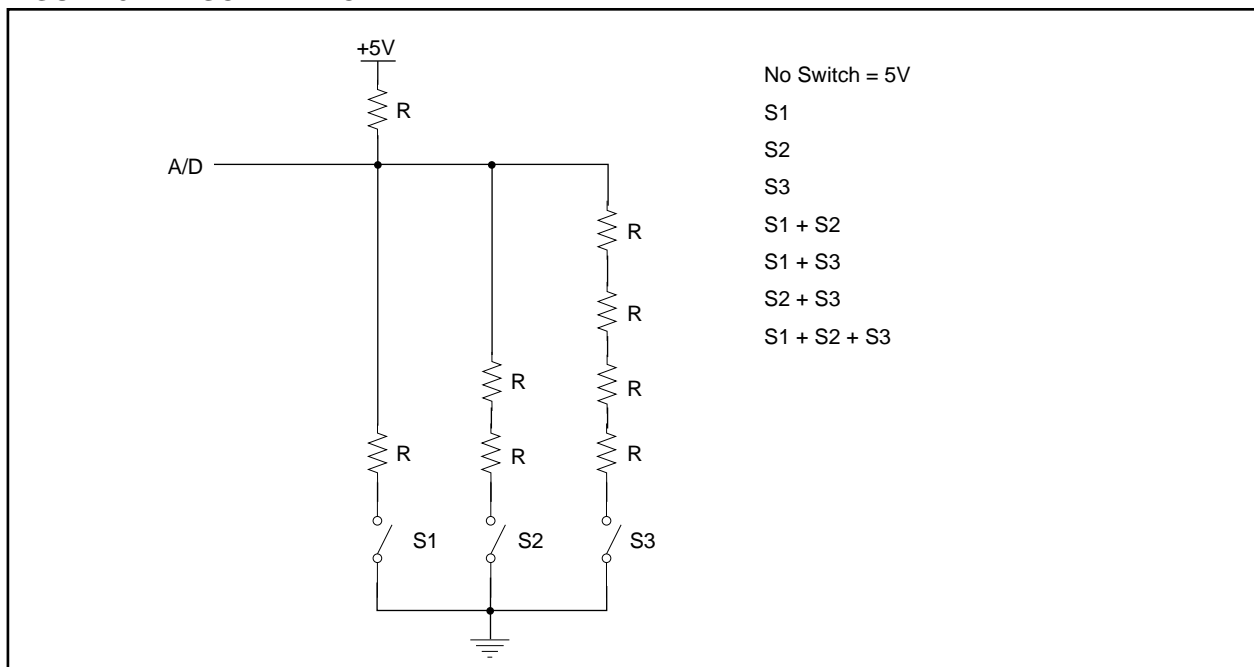


FIGURE 3: SCHEMATIC



Microchip Technology Incorporated, has been granted a nonexclusive, worldwide license to reproduce, publish and distribute all submitted materials, in either original or edited form. The author has affirmed that this work is an original, unpublished work and that he/she owns all rights to such work. All property rights, such as patents, copyrights and trademarks remain with author.

# Simple Circuit

---

NOTES: